

**UNITED
NATIONS**

E



**Economic and Social
Council**

Distr.
GENERAL

ECE/EB.AIR/WG.1/2010/xx
Page xx - **DRAFT**

Original: ENGLISH

2010 RESULTS OF MONITORING / MODELLING

Report by the Programme Coordinating Centre of the International Cooperative Programme on Assessment and Monitoring of Air Pollution Effects on Forests

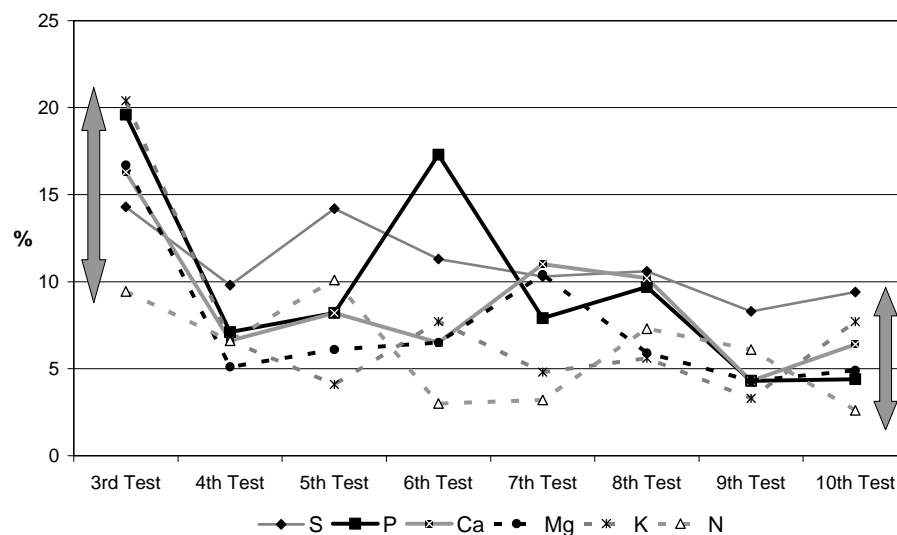
I. INTRODUCTION

II. WORKPLAN ITEMS COMMON TO ALL PROGRAMMES

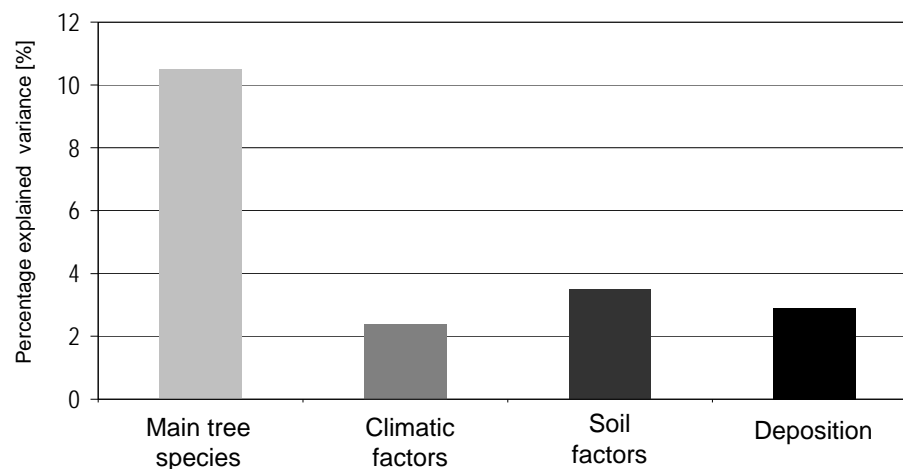
A. Targets and ex-post application

B. Robustness (QA Lab results)

Decreasing percentage of non tolerable results in the foliar chemistry ring tests of ICP Forests from 2001 to 2008.

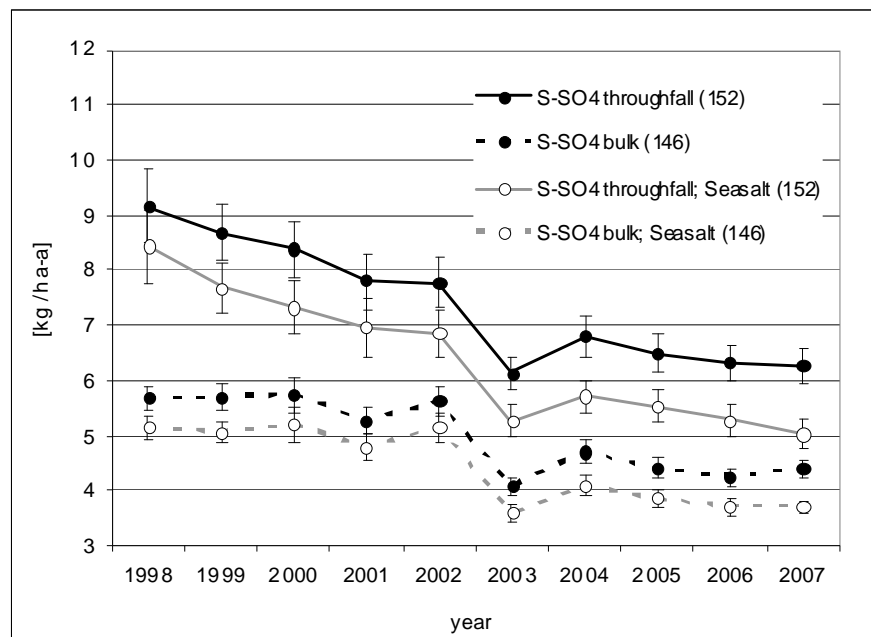


C. Links with biodiversity (van Dobben study)



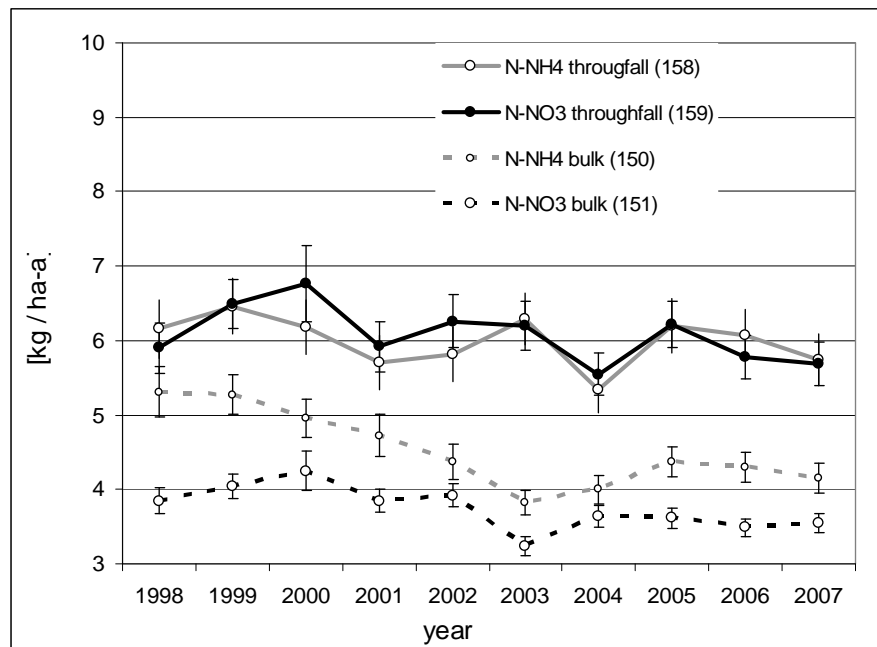
Percentage explained variance for different groups of variables in a model explaining the composition of forest ground vegetation composition

III. ACIDIFICATION (Sulphate deposition)



Annual mean bulk and throughfall deposition of sulphate (S-SO₄) with standard errors in 1998-2007

IV. NUTRIENT NITROGEN



Annual mean bulk and throughfall deposition of nitrate (N-NO₃) and ammonium (N-NH₄) with standard errors in 1998-2007

V. CROSS-CUTTING ISSUES

Defoliation

Soil solution study

EMEP – ICP Forests Comparison of Deposition