

# The Significance of Forest Monitoring Programmes: the Finnish perspective

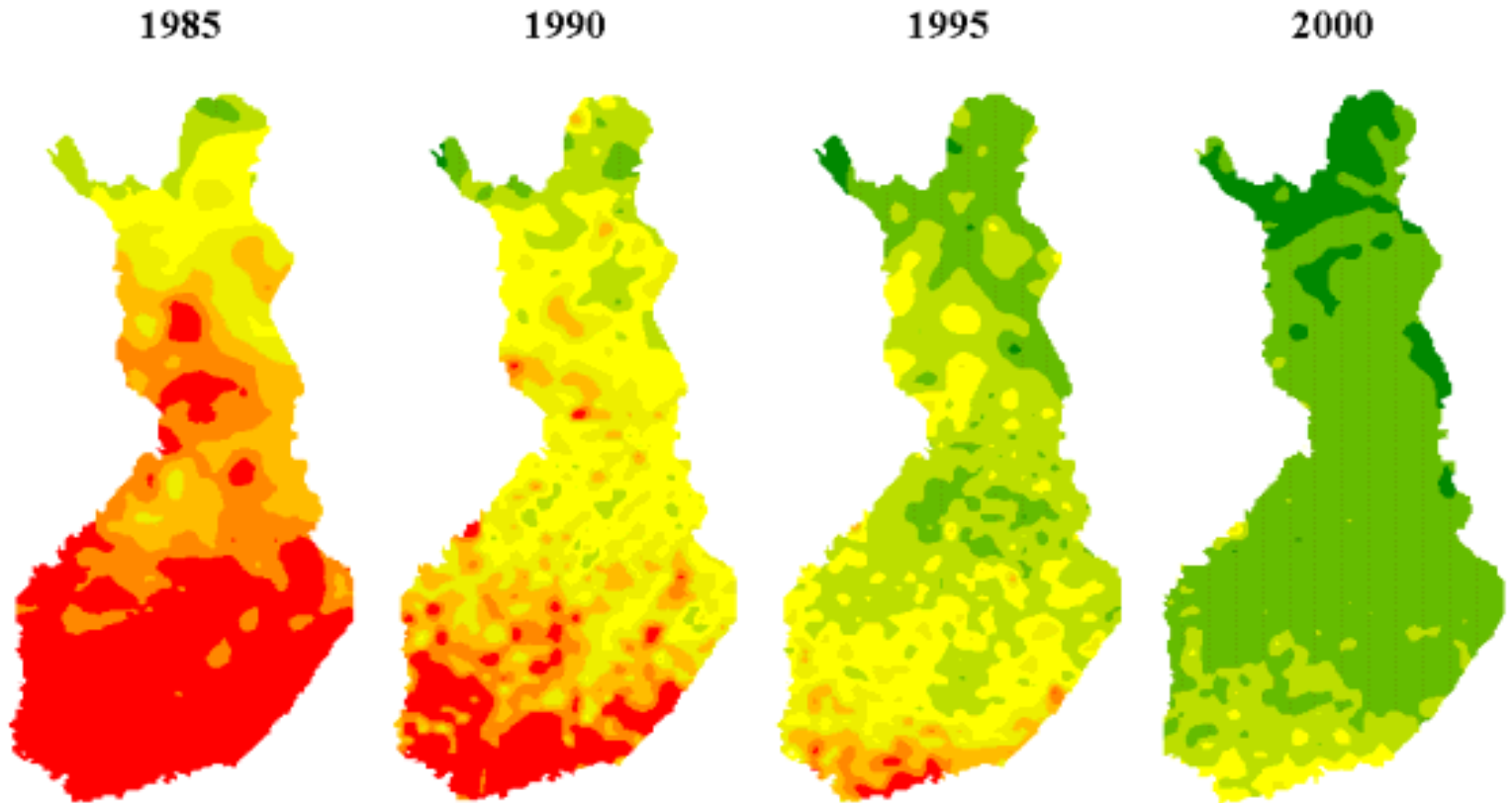
John Derome, Päivi Merilä, Martti Lindgren, Pasi Rautio,  
Hannu Raitio

Finnish Forest Research Institute  
(Metla)

# Success story:

Pb concentrations in mosses (Poikolainen 2000)

Lyijy ( Pb )  
mg/kg



# Future challenges

- Integration of Level I crown condition monitoring into the NFI system
- Development of a national forest monitoring network covering Level I & II activities and other forest monitoring networks (e.g. biodiversity)
- Expansion and modification of the current monitoring activities to cover:
  - the effects of climate change
  - carbon sequestration and fluxes
  - biodiversity
  - protective role of the forests